

**Whispering Hills Primary School
Combined 3-Year Education Plan and Annual
Education Results Report (AERR)**



2020-2021

Together Everyone Achieves More = TEAM

Celebrating a Community of Learners and Leaders

Proud to be an APPLE School

Whispering Hills Primary School is a dual track school offering English and French Immersion instruction to students in kindergarten to grade three. Currently enrolment is 311 students, of which 81 students are in kindergarten, 65 students in grade one, 96 students in grade 2 and 69 students are in grade three. Working together to offer programming are sixteen teachers, fifteen educational assistants, one librarian, an inclusive education lead teacher, vice principal and principal. A school therapist supports students visiting the school four days per week. Offering early learning opportunities, Athabasca Playschool Society runs a program within our school. We are working closely with the executive to offer increased supports for our youngest students.

The following programs are offered:

- Nutrition and movement opportunities through A Project Promoting Active Living and Healthy Eating (APPLE) school
- Leveled Literacy Intervention (LLI) offered to students in grades 1-3 rotating throughout the year in English and French
- Speech Supports being offered through contracted speech language pathologists
- Success in Schools meeting with identified families
- Students in grade 1, 2, and 3 divided into colored teams working on developing knowledge of 7 Grandfather Teachings, promoting diversity, and building relationships across the grades with a different focus each month
- Support from Family Community Support Services offering individual student support
- Nutrition grant provides breakfast, milk and choose most often lunch for all students partnering local restaurants
- Purchase of additional cross country skis and snowshoes by Fundraising Society
- Dedicated small group of parents serving on School Council and Fundraising Society
- On-line instruction is offered for families requesting alternative method of delivery
- Dedicated staff willing to provide on-line learning opportunities

Combined May 2020 Accountability Pillar Overall Summary

Measure Category	Measure	Whispering Hills Primary Sch			Alberta			Measure Evaluation		
		Current Result	Prev Year Result	Prev 3 Year Average	Current Result	Prev Year Result	Prev 3 Year Average	Achievement	Improvement	Overall
Safe and Caring Schools	Safe and Caring	98.9	100.0	98.9	89.4	89.0	89.2	Very High	Maintained	Excellent
Student Learning Opportunities	Program of Studies	96.7	93.4	93.0	82.4	82.2	82.0	Very High	Maintained	Excellent
	Education Quality	99.1	100.0	99.6	90.3	90.2	90.1	Very High	Maintained	Excellent
	Drop Out Rate	n/a	n/a	n/a	2.7	2.6	2.7	n/a	n/a	n/a
	High School Completion Rate (3 yr)	n/a	n/a	n/a	79.7	79.1	78.4	n/a	n/a	n/a
Student Learning Achievement (Grades K-9)	PAT: Acceptable	n/a	n/a	n/a	n/a	73.8	73.6	n/a	n/a	n/a
	PAT: Excellence	n/a	n/a	n/a	n/a	20.6	20.0	n/a	n/a	n/a
Student Learning Achievement (Grades 10-12)	Diploma: Acceptable	n/a	n/a	n/a	n/a	83.6	83.4	n/a	n/a	n/a
	Diploma: Excellence	n/a	n/a	n/a	n/a	24.0	23.5	n/a	n/a	n/a
	Diploma Exam Participation Rate (4+ Exams)	n/a	n/a	n/a	56.4	56.3	55.6	n/a	n/a	n/a
	Rutherford Scholarship Eligibility Rate	n/a	n/a	n/a	66.6	64.8	63.5	n/a	n/a	n/a
Preparation for Lifelong Learning, World of Work, Citizenship	Transition Rate (6 yr)	n/a	n/a	n/a	60.1	59.0	58.5	n/a	n/a	n/a
	Work Preparation	100.0	100.0	93.3	84.1	83.0	82.7	Very High	Improved	Excellent
	Citizenship	98.9	96.6	95.8	83.3	82.9	83.2	Very High	Maintained	Excellent
Parental Involvement	Parental Involvement	96.8	95.3	94.2	81.8	81.3	81.2	Very High	Maintained	Excellent
Continuous Improvement	School Improvement	100.0	100.0	89.5	81.5	81.0	80.9	Very High	Improved	Excellent

Notes:

1. Data values have been suppressed where the number of respondents/students is fewer than 6. Suppression is marked with an asterisk (*).
2. Overall evaluations can only be calculated if both improvement and achievement evaluations are available.
3. Student participation in the survey was impacted between 2014 and 2017 due to the number of students responding through the OurSCHOOL/TTFM (Tell Them From Me) survey tool.
4. Aggregated PAT results are based upon a weighted average of percent meeting standards (Acceptable, Excellence). The weights are the number of students enrolled in each course. Courses included: English Language Arts (Grades 6, 9, 9 KAE); Français (6e et 9e année); French Language Arts (6e et 9e année); Mathematics (Grades 6, 9, 9 KAE); Science (Grades 6, 9, 9 KAE); and Social Studies (Grades 6, 9, 9 KAE).
5. Participation in Provincial Achievement Tests was impacted by the fires in May to June 2016 and May to June 2019. Caution should be used when interpreting trends over time for the province and those school authorities affected by these events.
6. Aggregated Diploma results are a weighted average of percent meeting standards (Acceptable, Excellence) on Diploma Examinations. The weights are the number of students writing the Diploma Examination for each course. Courses included: English Language Arts 30-1; English Language Arts 30-2; French Language Arts 30-1; Français 30-1; Mathematics 30-1; Mathematics 30-2; Chemistry 30; Physics 30; Biology 30; Science 30; Social Studies 30-1; and Social Studies 30-2.
7. Participation in Diploma Examinations was impacted by the fires in May to June 2016 and May to June 2019. Caution should be used when interpreting trends over time for the province and those school authorities affected by these events.
8. Weighting of school-awarded marks in diploma courses increased from 50% to 70% in the 2015/16 school year. Caution should be used when interpreting trends over time.
9. 2016 results for the 3-year High School Completion and Diploma Examination Participation Rates have been adjusted to reflect the correction of the Grade 10 cohort.
10. Improvement evaluations are not calculated for school and school authority Drop Out and Rutherford Scholarship Eligibility rates. Starting in 2019, an updated methodology was applied to more accurately attribute results in cases where students receive programming from more than one provider within a school year. Caution should be used when interpreting school and school authority results over time.

Measure Evaluation Reference

Achievement Evaluation

Achievement evaluation is based upon a comparison of Current Year data to a set of standards that remain consistent over time. The Standards are calculated by taking the 3-year average of baseline data for each measure across all school jurisdictions and calculating the 5th, 25th, 75th and 95th percentiles. Once calculated, these standards remain in place from year to year to allow for consistent planning and evaluation.

The table below shows the range of values defining the 5 achievement evaluation levels for each measure.

Measure	Very Low	Low	Intermediate	High	Very High
Safe and Caring	0.00 - 77.62	77.62 - 81.05	81.05 - 84.50	84.50 - 88.03	88.03 - 100.00
Program of Studies	0.00 - 66.31	66.31 - 72.65	72.65 - 78.43	78.43 - 81.59	81.59 - 100.00
Education Quality	0.00 - 80.94	80.94 - 84.23	84.23 - 87.23	87.23 - 89.60	89.60 - 100.00
Drop Out Rate	100.00 - 9.40	9.40 - 6.90	6.90 - 4.27	4.27 - 2.79	2.79 - 0.00
High School Completion Rate (3 yr)	0.00 - 57.03	57.03 - 62.36	62.36 - 73.88	73.88 - 81.79	81.79 - 100.00
PAT: Acceptable	0.00 - 66.07	66.07 - 70.32	70.32 - 79.81	79.81 - 84.64	84.64 - 100.00
PAT: Excellence	0.00 - 9.97	9.97 - 13.44	13.44 - 19.56	19.56 - 25.83	25.83 - 100.00
Diploma: Acceptable	0.00 - 71.45	71.45 - 78.34	78.34 - 84.76	84.76 - 87.95	87.95 - 100.00
Diploma: Excellence	0.00 - 9.55	9.55 - 12.59	12.59 - 19.38	19.38 - 23.20	23.20 - 100.00
Diploma Exam Participation Rate (4+ Exams)	0.00 - 31.10	31.10 - 44.11	44.11 - 55.78	55.78 - 65.99	65.99 - 100.00
Rutherford Scholarship Eligibility Rate	0.00 - 47.98	47.98 - 55.78	55.78 - 68.95	68.95 - 74.96	74.96 - 100.00
Transition Rate (6 yr)	0.00 - 39.80	39.80 - 46.94	46.94 - 56.15	56.15 - 68.34	68.34 - 100.00
Work Preparation	0.00 - 66.92	66.92 - 72.78	72.78 - 77.78	77.78 - 86.13	86.13 - 100.00
Citizenship	0.00 - 66.30	66.30 - 71.63	71.63 - 77.50	77.50 - 81.08	81.08 - 100.00
Parental Involvement	0.00 - 70.76	70.76 - 74.58	74.58 - 78.50	78.50 - 82.30	82.30 - 100.00
School Improvement	0.00 - 65.25	65.25 - 70.85	70.85 - 76.28	76.28 - 80.41	80.41 - 100.00

Notes:

- 1) For all measures except Drop Out Rate: The range of values at each evaluation level is interpreted as greater than or equal to the lower value, and less than the higher value. For the Very High evaluation level, values range from greater than or equal to the lower value to 100%.
- 2) Drop Out Rate measure: As "Drop Out Rate" is inverse to most measures (i.e. lower values are "better"), the range of values at each evaluation level is interpreted as greater than the lower value and less than or equal to the higher value. For the Very High evaluation level, values range from 0% to less than or equal to the higher value.

Improvement Table

For each jurisdiction, improvement evaluation consists of comparing the Current Year result for each measure with the previous three-year average. A chi-square statistical test is used to determine the significance of the improvement. This test takes into account the size of the jurisdiction in the calculation to make improvement evaluation fair across jurisdictions of different sizes.

The table below shows the definition of the 5 improvement evaluation levels based upon the chi-square result.

Evaluation Category	Chi-Square Range
Declined Significantly	3.84 + (current < previous 3-year average)
Declined	1.00 - 3.83 (current < previous 3-year average)
Maintained	less than 1.00
Improved	1.00 - 3.83 (current > previous 3-year average)
Improved Significantly	3.84 + (current > previous 3-year average)

Overall Evaluation Table

The overall evaluation combines the Achievement Evaluation and the Improvement Evaluation. The table below illustrates how the Achievement and Improvement evaluations are combined to get the overall evaluation.

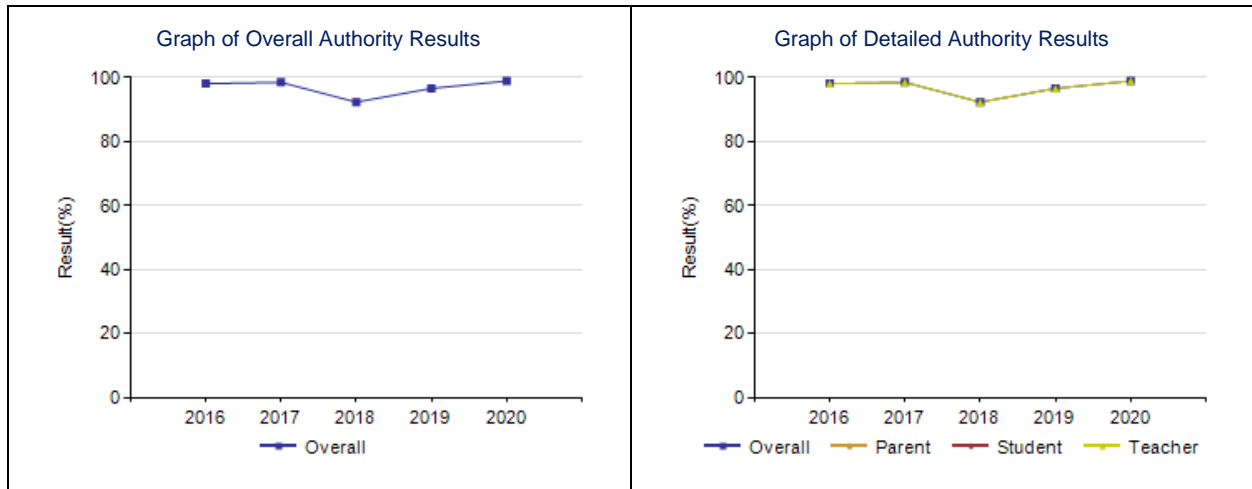
Improvement	Achievement				
	Very High	High	Intermediate	Low	Very Low
Improved Significantly	Excellent	Good	Good	Good	Acceptable
Improved	Excellent	Good	Good	Acceptable	Issue
Maintained	Excellent	Good	Acceptable	Issue	Concern
Declined	Good	Acceptable	Issue	Issue	Concern
Declined Significantly	Acceptable	Issue	Issue	Concern	Concern

Category Evaluation

The category evaluation is an average of the Overall Evaluation of the measures that make up the category. For the purpose of the calculation, consider an Overall Evaluation of Excellent to be 2, Good to be 1, Acceptable to be 0, Issue to be -1, and Concern to be -2. The simple average (mean) of these values rounded to the nearest integer produces the Category Evaluation value. This is converted back to a

Citizenship – Measure Details

Percentage of teachers, parents and students who are satisfied that students model the characteristics of active citizenship.																
	School						Authority					Province				
	2016	2017	2018	2019	2020	2021	2016	2017	2018	2019	2020	2016	2017	2018	2019	2020
Overall	98.1	98.5	92.3	96.6	98.9	100	76.9	81.0	81.8	83.1	83.3	83.9	83.7	83.0	82.9	83.3
Teacher	98.1	98.5	92.3	96.6	98.9	100	92.4	95.2	94.7	94.4	93.7	94.5	94.0	93.4	93.2	93.6
Parent	n/a	n/a	n/a	n/a	n/a	n/a	71.5	75.3	73.9	75.3	77.0	82.9	82.7	81.7	81.9	82.4
Student	n/a	n/a	n/a	n/a	n/a	n/a	66.6	72.6	76.7	79.6	79.2	74.5	74.4	73.9	73.5	73.8

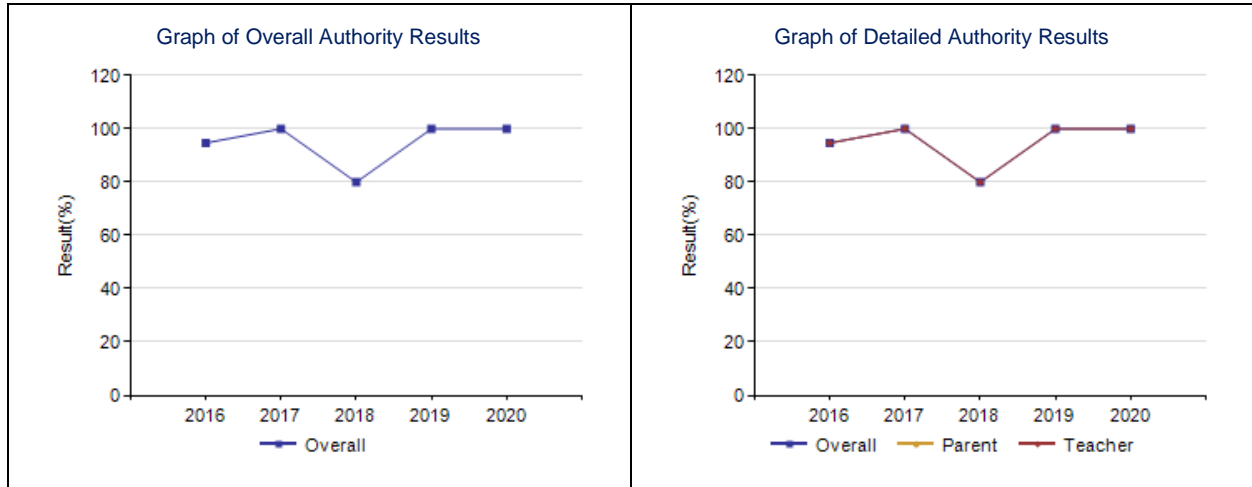


- Share daily happenings and events such as Remembrance Day and Christmas Concert using technology eg. Facebook Live, recordings on Youtube
- Promote 7 Grandfather teachings monthly to families using week at a glance and Facebook (see Appendix A)
- Encourage class participation in creating Remembrance Day posters for the local branch of the Legion and creating cards to give to community members for holidays
- Host Terry Fox walk, Orange Shirt Day, Food bank Drive at Christmas
- Nominate a worthy student for Honoring Spirit: Indigenous Students Awards

Note: School wide surveys to families and students did not occur due to at home learning during the pandemic.

Work Preparation – Measure Details

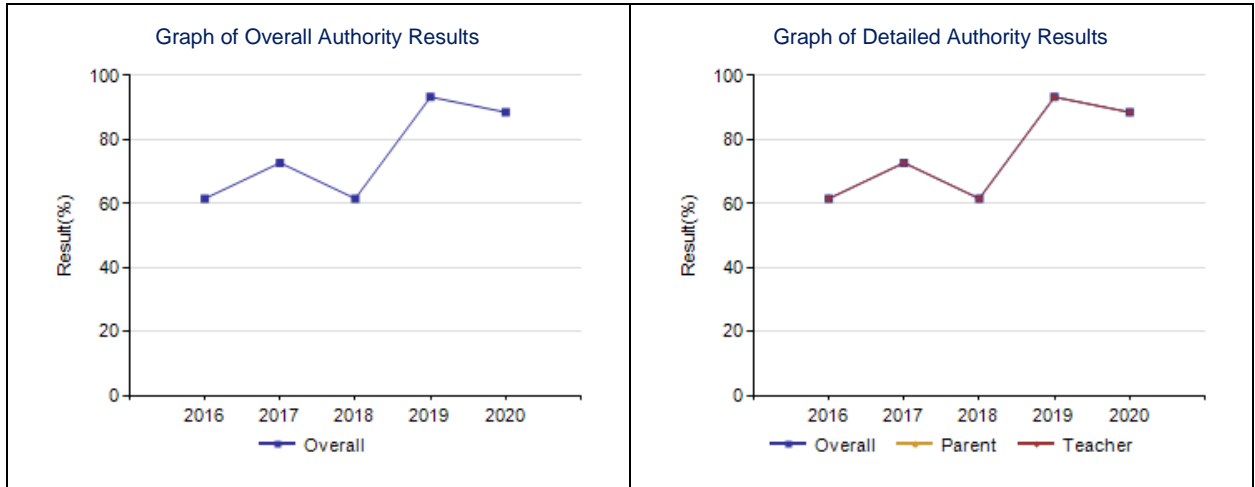
Percentage of teachers and parents who agree that students are taught attitudes and behaviours that will make them successful at work when they finish school.																
	School						Authority					Province				
	2016	2017	2018	2019	2020	2021	2016	2017	2018	2019	2020	2016	2017	2018	2019	2020
Overall	94.7	100.0	80.0	100.0	100.0	100	74.6	78.4	77.1	82.0	83.2	82.6	82.7	82.4	83.0	84.1
Teacher	94.7	100.0	80.0	100.0	100.0	100	88.7	92.8	92.2	95.4	94.6	90.5	90.4	90.3	90.8	92.2
Parent	n/a	n/a	n/a	n/a	n/a	n/a	60.4	63.9	62.0	68.6	71.7	74.8	75.1	74.6	75.2	76.0



- Promote attitudes valued in work environment such as being on time, being prepared, focusing on task at hand referring to learner attributes on the report card
- Promote Growth Mindset by creating bulletin board with information and by providing learning opportunities for staff
- Promote compassion over curriculum during this stressful time due to the Pandemic

Lifelong Learning – Measure Details

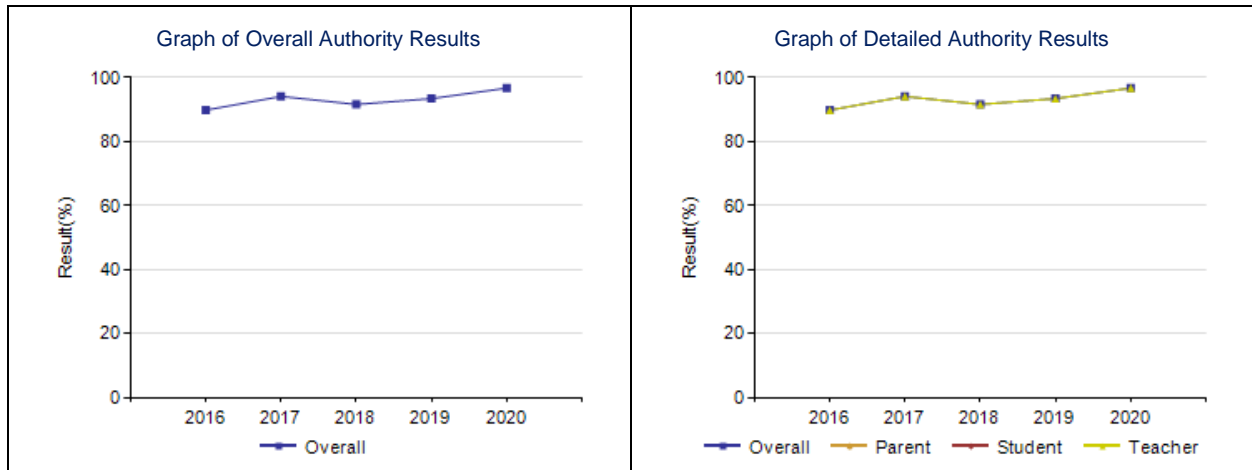
Percentage of teacher and parent satisfaction that students demonstrate the knowledge, skills and attitudes necessary for lifelong learning.																
	School						Authority					Province				
	2016	2017	2018	2019	2020	2021	2016	2017	2018	2019	2020	2016	2017	2018	2019	2020
Overall	61.5	72.7	61.5	93.3	88.5	100	66.1	73.0	73.2	72.6	77.9	70.7	71.0	70.9	71.4	72.6
Teacher	61.5	72.7	61.5	93.3	88.5	100	77.2	85.9	85.1	89.6	91.1	77.3	77.3	77.8	78.8	80.6
Parent	n/a	n/a	n/a	n/a	n/a	n/a	54.9	60.1	61.2	55.7	64.7	64.2	64.8	64.0	64.0	64.6



- Promote learner attributes to students by having them visible in the school for student reference
- Promote Growth Mindset by creating bulletin board with information
- Purchase of license website <https://www.xmovement.com/> promoting active life style and growth mindset

Program of Studies – Measure Details

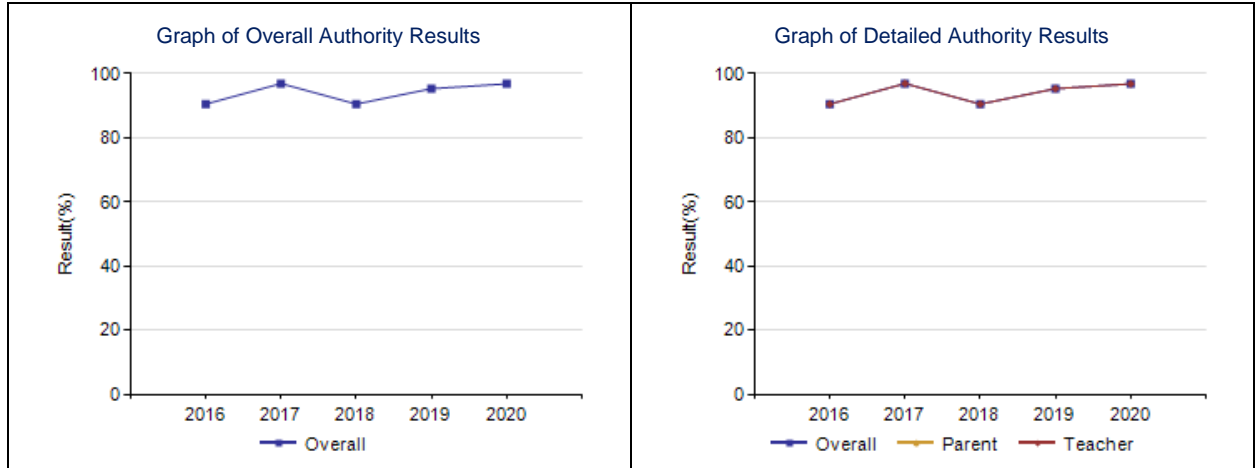
Percentage of teachers, parents and students satisfied with the opportunity for students to receive a broad program of studies including fine arts, career, technology, and health and physical education.																
	School						Authority					Province				
	2016	2017	2018	2019	2020	2021	2016	2017	2018	2019	2020	2016	2017	2018	2019	2020
Overall	89.8	94.1	91.6	93.4	96.7	100	73.0	76.6	75.2	79.4	80.1	81.9	81.9	81.8	82.2	82.4
Teacher	89.8	94.1	91.6	93.4	96.7	100	81.8	86.3	86.1	87.4	89.1	88.1	88.0	88.4	89.1	89.3
Parent	n/a	n/a	n/a	n/a	n/a	n/a	73.6	74.7	69.9	74.0	76.2	80.1	80.1	79.9	80.1	80.1
Student	n/a	n/a	n/a	n/a	n/a	n/a	63.6	68.8	69.5	76.6	75.1	77.5	77.7	77.2	77.4	77.8



- Encourage integration of technology into other subject areas using STEM projects
- Promote APPLE school Monthly campaigns using daily announcements
- Utilize cross country skis, snowshoes and sleds for outdoor play
- Broaden opportunities for students to participate in virtual field trips, speakers, etc.
- Purchase of license website <https://www.xmovement.com/> promoting active life style and growth mindset
- Continued LLI instruction to students who meet criteria
- Dedicated speech language pathologist and occupational therapist providing supports for students with challenges

Parental Involvement – Measure Details

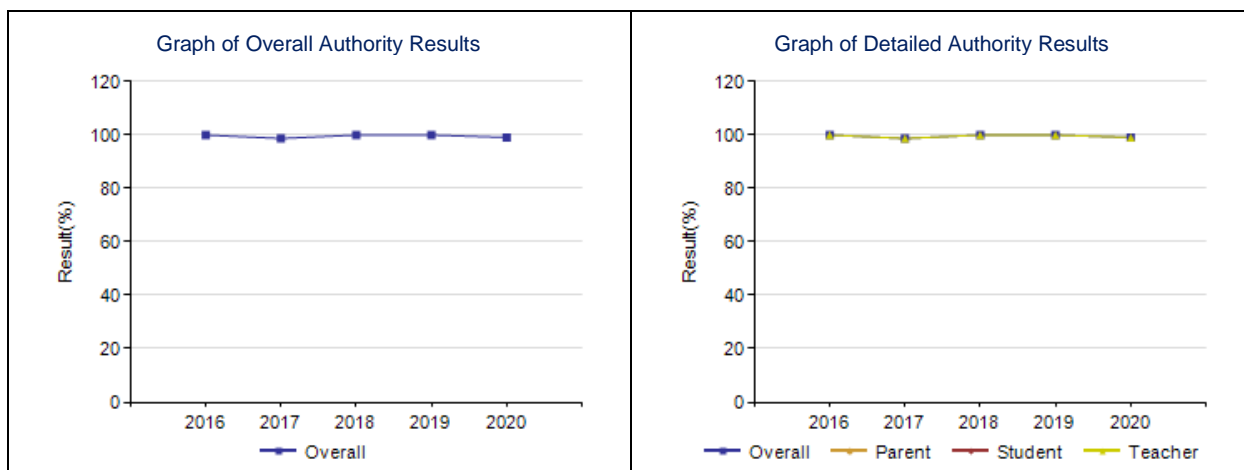
Percentage of teachers and parents satisfied with parental involvement in decisions about their child's education.																
	School						Authority					Province				
	2016	2017	2018	2019	2020	2021	2016	2017	2018	2019	2020	2016	2017	2018	2019	2020
Overall	90.5	96.9	90.5	95.3	96.8	100	77.0	81.3	78.5	82.0	84.0	80.9	81.2	81.2	81.3	81.8
Teacher	90.5	96.9	90.5	95.3	96.8	100	86.6	91.0	89.0	93.6	95.3	88.4	88.5	88.9	89.0	89.6
Parent	n/a	n/a	n/a	n/a	n/a	n/a	67.5	71.7	68.0	70.3	72.6	73.5	73.9	73.4	73.6	73.9



- Promote Fundraising and School Council meetings using monthly Facebook events
- Promote Fundraising and School Council meetings by sending out Zoom links to all families
- Provide Council update in week at a glance
- Success in School meetings
- Zoom meetings with families who have children that require specialized supports

Education Quality – Measure Details

Percentage of teachers, parents and students satisfied with the overall quality of basic education.																
	School						Authority					Province				
	2016	2017	2018	2019	2020	2021	2016	2017	2018	2019	2020	2016	2017	2018	2019	2020
Overall	100.0	98.7	100.0	100.0	99.1	100	84.4	87.0	88.7	90.0	89.5	90.1	90.1	90.0	90.2	90.3
Teacher	100.0	98.7	100.0	100.0	99.1	100	94.7	96.3	97.6	97.0	96.7	96.0	95.9	95.8	96.1	96.4
Parent	n/a	n/a	n/a	n/a	n/a	n/a	75.5	77.2	80.2	82.8	82.8	86.1	86.4	86.0	86.4	86.7
Student	n/a	n/a	n/a	n/a	n/a	n/a	83.0	87.4	88.2	90.4	89.0	88.0	88.1	88.2	88.1	87.8



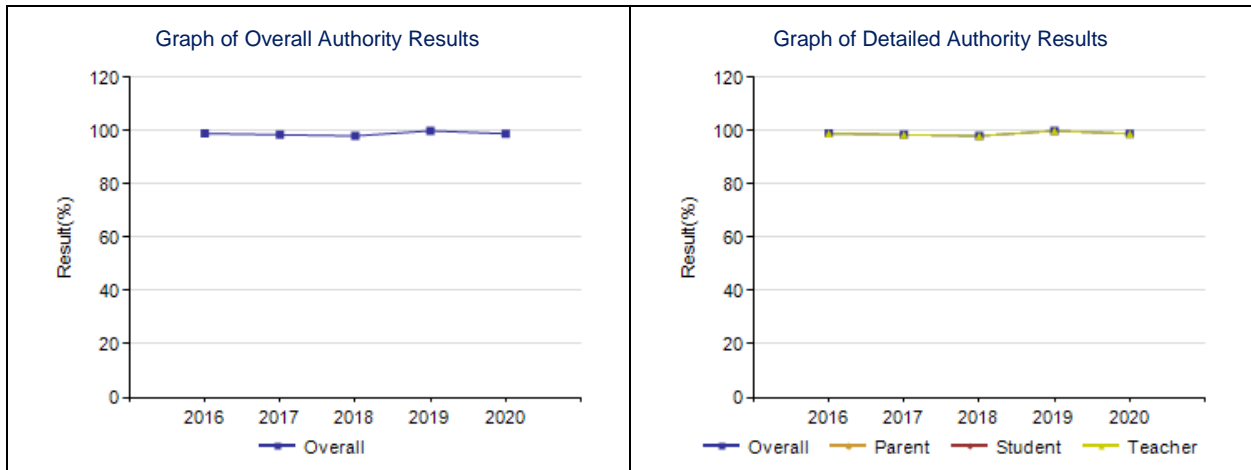
- Results from MIPI (baseline assessment in math) completed in October 2020 indicated the following:

	# of students 68% or above	# of students 50% - 68%	# of students 50% or below
Grade 2	80	3	2
Grade 3	37	12	10

- January 2020 reading data for grades 1-3 ELA indicate 81% of students are reading *at or above grade level achievement*. Of the remaining 19% of participants, 9% are *insufficient* and 10% are reading *below grade level* expectations.
- January 2020 reading data for grades 1-3 FLA indicate, 58% of French Immersion students are reading *at or above grade level achievement*. Of the remaining 42% of participants, 39% are *insufficient* and 3% are reading *below grade level* expectations.
- Administration support three times per week during English Language Arts instruction to allow French Immersion teacher time to work with small groups of students
- Afternoon support for French Immersion kindergarten grade one class three times/week
- Professional learning in growth mindset, conceptual understanding and numeracy
- Offer after school tutoring to students needing support
- Division numeracy lead teacher on staff guiding teachers

Safe and Caring – Measure Details

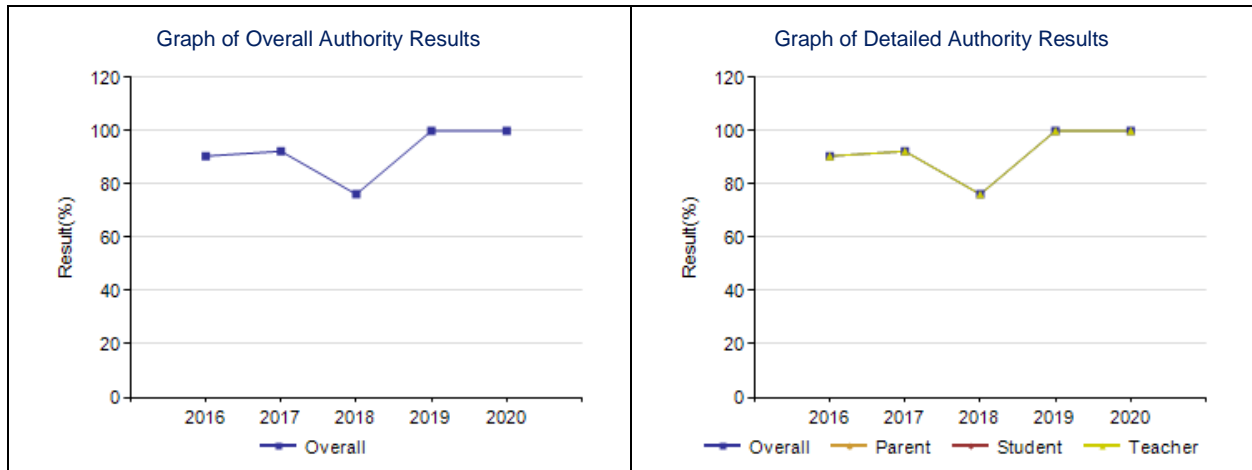
Percentage of teacher, parent and student agreement that students are safe at school, are learning the importance of caring for others, are learning respect for others and are treated fairly in school.																
	School						Authority					Province				
	2016	2017	2018	2019	2020	2021	2016	2017	2018	2019	2020	2016	2017	2018	2019	2020
Overall	99.0	98.5	98.1	100.0	98.9	100	85.0	86.6	87.5	89.8	89.5	89.5	89.5	89.0	89.0	89.4
Teacher	99.0	98.5	98.1	100.0	98.9	100	94.6	96.2	97.3	97.4	97.4	95.4	95.3	95.0	95.1	95.3
Parent	n/a	n/a	n/a	n/a	n/a	n/a	83.3	83.1	83.4	84.2	86.3	89.8	89.9	89.4	89.7	90.2
Student	n/a	n/a	n/a	n/a	n/a	n/a	77.0	80.6	81.7	87.8	84.9	83.4	83.3	82.5	82.3	82.6



- Immediate follow-up with families who identify concern with safety, respect and fairness
- Promote 7 Grandfather teachings monthly to families using week at a glance and Facebook
- Honor Anti Bullying week in November by reading stories to students during library time to promote treating others fairly
- Honor Orange Shirt Day and provide Every Child Matters materials to children
- Honor Pink Shirt Day February 24, 2021
- Provide resources to families regarding bullying from Safe and Caring Schools
- Provide continual explanation to students regarding safety practices and rationale

School Improvement – Measure Details

Percentage of teachers, parents and students indicating that their school and schools in their jurisdiction have improved or stayed the same the last three years.																	
	School						Authority						Province				
	2016	2017	2018	2019	2020	2021	2016	2017	2018	2019	2020	2016	2017	2018	2019	2020	
Overall	90.5	92.3	76.2	100.0	100.0	100	76.8	81.2	78.8	84.3	85.5	81.2	81.4	80.3	81.0	81.5	
Teacher	90.5	92.3	76.2	100.0	100.0	100	82.6	91.5	86.9	91.1	92.9	82.3	82.2	81.5	83.4	85.0	
Parent	n/a	n/a	n/a	n/a	n/a	n/a	77.9	75.4	73.8	78.0	81.0	79.7	80.8	79.3	80.3	80.0	
Student	n/a	n/a	n/a	n/a	n/a	n/a	69.8	76.6	75.6	83.9	82.5	81.5	81.1	80.2	79.4	79.6	



- Adoption of growth mindset
- Additional supports provided as students and families transition from in-class instruction to learning at home and/or on line
- Improved instruction using google classroom
- Improved collaboration

Appendix A

Month	Teachings	Events	Citizenship Activity	APPLE Campaign
September	Safe, Caring, Welcoming - 2 weeks each	Orange Shirt Day	Every Child Matters	Super Hygiene Heroes
October	Safe, Caring, Welcoming - 2 weeks each	Thanksgiving Halloween	Donation of candy to AADAC - not possible due to pandemic	What is the commotion on Emotions?
November	Respect (Kode's Quest(ion): A Story of Respect by Katherena Vermette and Irene Kuziw)	Remembrance Day Formal Dress Day	Completion of Remembrance day activities promoting local Legion	Unwind your Mind
December	Humility (Singing Sisters: A Story of Humility by Katherena Vermette and Irene Kuziw)	Christmas Wear Winter Socks, Hat and Sweater	Food Bank Donations Christmas Card to one neighbor in our area	Address your Stress
January	Wisdom (Amik Loves School: A Sotry of Wisdom by Katherena Vermette and Irene Kuziw)	Winter Walk Day		New Year, New You
February	Love (The Just Right Gift: A Story of Love by Katherena Vermette and Irene Kuziw)	Valentine's Day 100 Day	Valentine Card to neighbors Jump Rope for Heart Black History Month	Brilliant Brains
March	Truth (What is Truth, Petsy?: A Story of Truth by Katherena Vermette and Irene Kuziw)	Student Led Conferences	International Women's Day	Feel Great with a Healthy Plate
April	Honesty (Mr. Peabody's Apples by Madonna and Misaabe's stories: A Story of Honesty by Katherena Vermette and Irene Kuziw)	Easter	Community/School wide cleanup Earth Day	Dream Team
May	Bravery/Courage (The First Day: A Story of Courage by Katherena Vermette and Irene Kuziw)	Orientation to LTIS for grade 3	Bus Driver Appreciation Volunteer Appreciation	Power of Positivity
June	Celebrate a Community of Learners		Thank you cards Canada Day	What is a Healthy School?